

# GATHER2 Pivotal Phase 3 Study Results: Efficacy of Intravitreal Avacincaptad Pegol in Geographic Atrophy

---

Arshad M Khanani, MD, MA<sup>1</sup>; Sunil S Patel, MD, PhD<sup>2</sup>; Giovanni Staurenghi, MD<sup>3</sup>; Ramin Tadayoni, MD, PhD<sup>4</sup>; Carl J Danzig, MD<sup>5</sup>; David R Lally, MD<sup>6</sup>; Anat Loewenstein, MD<sup>7</sup>; David S Boyer, MD<sup>8</sup>; Carl D Regillo, MD<sup>9</sup>; Tien P Wong, MD<sup>10</sup>; Glenn J Jaffe, MD<sup>11</sup>; Justin Tang, PhD<sup>12</sup>; Liansheng Zhu, PhD<sup>12</sup>; Hersh Patel, OD<sup>12</sup>; Julie Clark, MD<sup>12</sup>

*<sup>1</sup>Sierra Eye Associates, Reno, NV, USA; University of Nevada, Reno School of Medicine, Reno, NV, USA. <sup>2</sup>West Texas Retina Consultants, Abilene, TX, USA. <sup>3</sup>Eye Clinic, Department of Biomedical and Clinical Sciences "Luigi Sacco," University of Milan, Milan, Italy; <sup>4</sup>Université de Paris, Ophthalmology Department, AP-HP, Hôpital Lariboisière, Paris, France. <sup>5</sup>Rand Eye Institute, Deerfield Beach, FL, USA; Florida Atlantic University, Charles E. Schmidt School of Medicine, Boca Raton, FL, USA. <sup>6</sup>New England Retina Consultants, Springfield, MA, USA. <sup>7</sup>Division of Ophthalmology, Tel Aviv Sourasky Medical Center, Tel Aviv University, Tel Aviv, Israel. <sup>8</sup>Retina Vitreous Associates Medical Group, Los Angeles, CA, USA. <sup>9</sup>Wills Eye Hospital, Philadelphia, PA, USA. <sup>10</sup>Retina Consultants of Texas; Retina Consultants of America; Blanton Eye Institute, Houston Methodist Hospital, Houston, TX, USA. <sup>11</sup>Department of Ophthalmology, Duke University, Durham, NC, USA. <sup>12</sup>Iveric Bio, Parsippany, NJ, USA.*

American Academy of Ophthalmology Annual Meeting, Chicago, IL,  
**September 30 – October 3, 2022**

**Avacincaptad Pegol is an investigational product that has not been evaluated for safety and efficacy by the FDA**

# Disclosures

## Dr. Khanani

- **Consultant:**

Abbvie, Adverum Biotechnologies, AGTC, Alimera Sciences, Allergan, Apellis Pharmaceuticals, Arrowhead, Pharmaceuticals, AsclepiX Therapeutics, Aviceda Therapeutics, Bausch & Lomb , BroadWing Bio, Cholgene Therapeutics, 4D Molecular Therapeutics, Eyepoint Pharmaceuticals, Fronterra Therapeutics, Gemini Pharmaceuticals, Genentech, Graybug Vision, Gyroscope Therapeutics, **Iveric Bio**, Janssen Pharmaceuticals, Kato Pharmaceuticals, Kartos Therapeutics, Kodiak Sciences, Kriya Therapeutics, Ocular Therapeutix, Oculis, Ocuterra, Opthea, Oxurion, Novartis, Perfuse, PolyPhotonix, Ray Therapeutics, Recens Medical, Regeneron Pharmaceuticals, REGENXBIO, Roche, Stealth Biotherapeutics Therapeutics, Thea Pharma, UNITY Biotechnology, Vanotech

- **Research Support:**

Adverum Biotechnologies, Annexon Biosciences, Apellis Pharmaceuticals, AsclepiX Therapeutics, 4D Molecular Therapeutics, Gemini Pharmaceuticals, Genentech, Graybug Vision, Gyroscope Therapeutics, **Iveric Bio**, Janssen Pharmaceuticals, Kodiak, Neurotech, NGM Biopharmaceuticals, Novartis, Ocular Therapeutix, Oculis, Ocuterra, Opthea, Oxurion, Recens Medical, REGENXBIO, Roche, UNITY Biotechnology

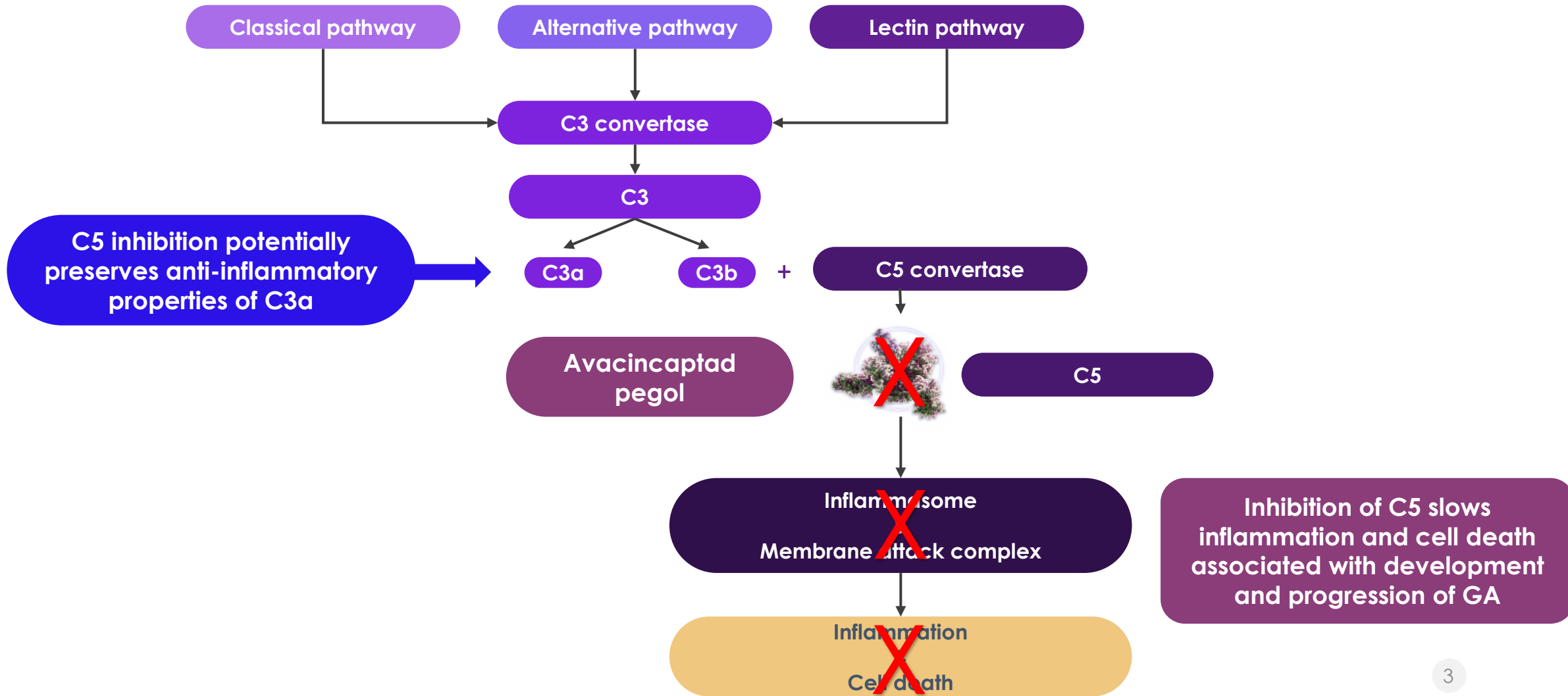
- **Speaker:**

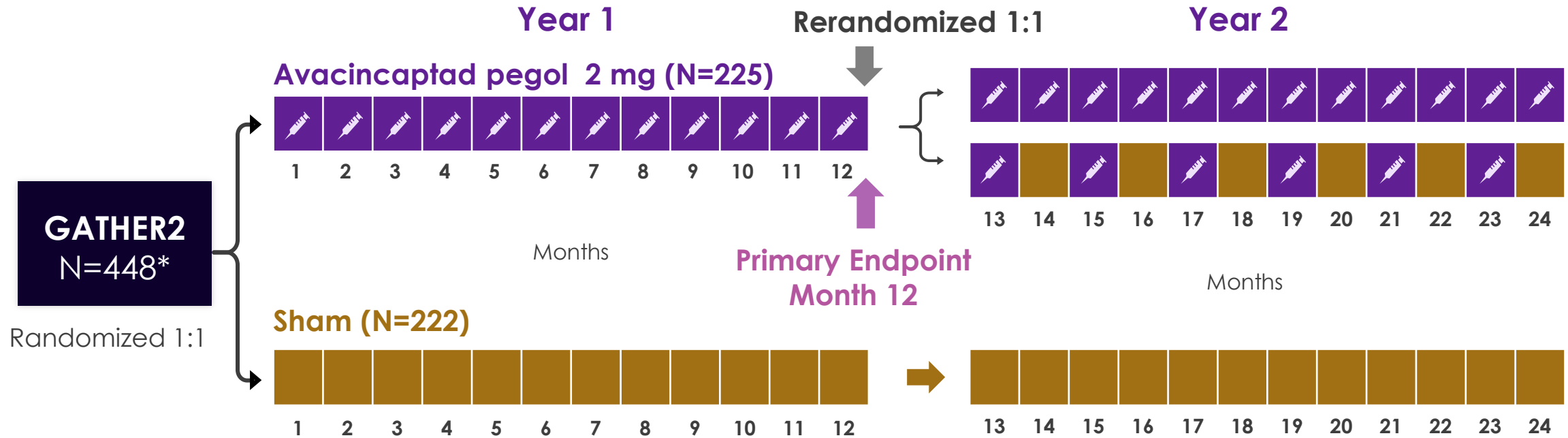
Abbvie, Apellis, Genentech, Novartis

- **Financial:**

Aviceda Therapeutics, PolyPhotonix, Recens Medical

# Avacincaptad pegol is a pegylated RNA aptamer designed to be a specific inhibitor of complement C5





## Primary Endpoint

Mean rate of growth (slope) in geographic atrophy area from baseline to month 12 (square root transformation)

## Inclusion Criteria

- Age  $\geq 50$  years
- BCVA between 20/25 and 20/320
- GA lesion:
  - Non-center point involving
  - GA in part within 1500  $\mu\text{m}$  from the foveal center
  - Total area between 2.5  $\text{mm}^2$  and 17.5  $\text{mm}^2$  (1 – 7 DA, respectively)
  - If multifocal lesions, at least 1 lesion had to be  $\geq 1.25 \text{ mm}^2$  (0.5 DA)

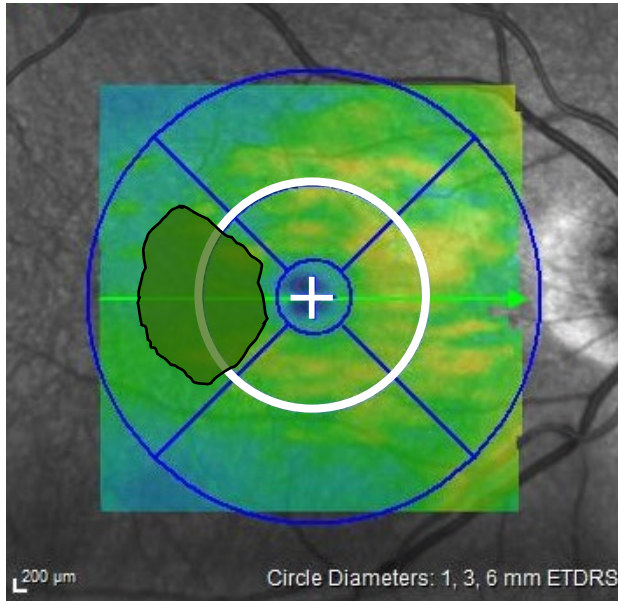
## Exclusion Criteria

- Evidence of CNV in either eye at baseline
- GA secondary to any condition other than AMD in either eye
- Any prior treatment for AMD or any prior intravitreal treatment for any indication in either eye (except oral vitamin or mineral supplements)
- Any ocular condition in study eye that could progress during the study and potentially affect central vision or otherwise act as a confounding factor
- Any sign of diabetic retinopathy in either eye

# GA had to be in part within 1500 $\mu\text{m}$ , but not involving the center point

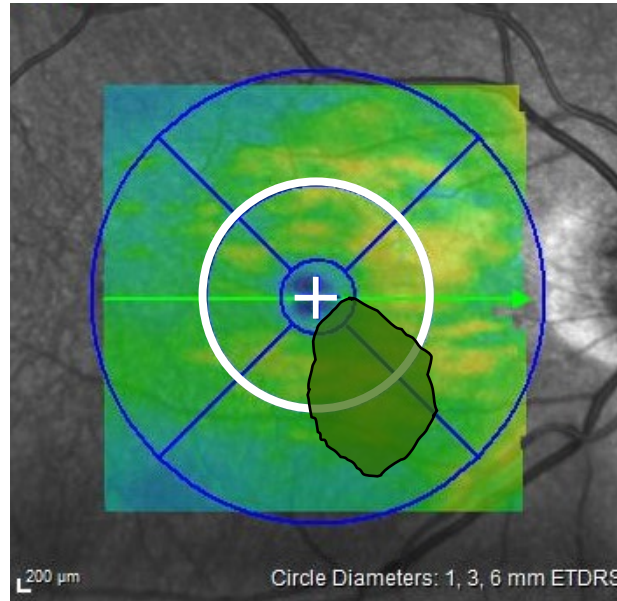
Center point involvement was determined by the Duke Reading Center using multimodal imaging

✓ **Included**



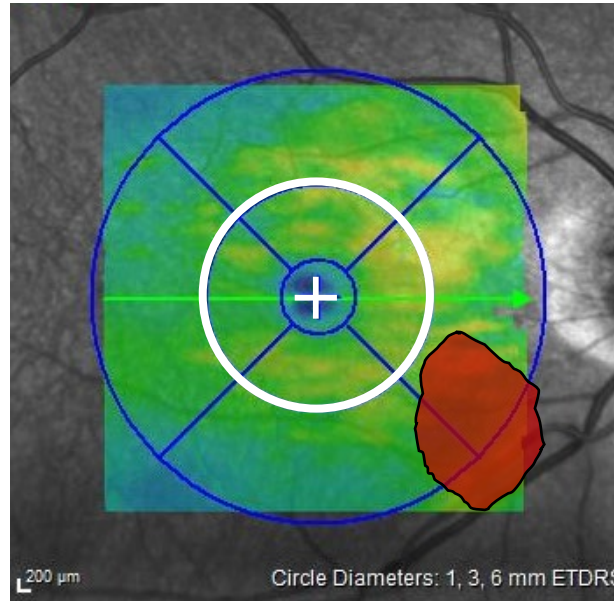
Within 1500  $\mu\text{m}$  of, but not involving the foveal center point

✓ **Included**



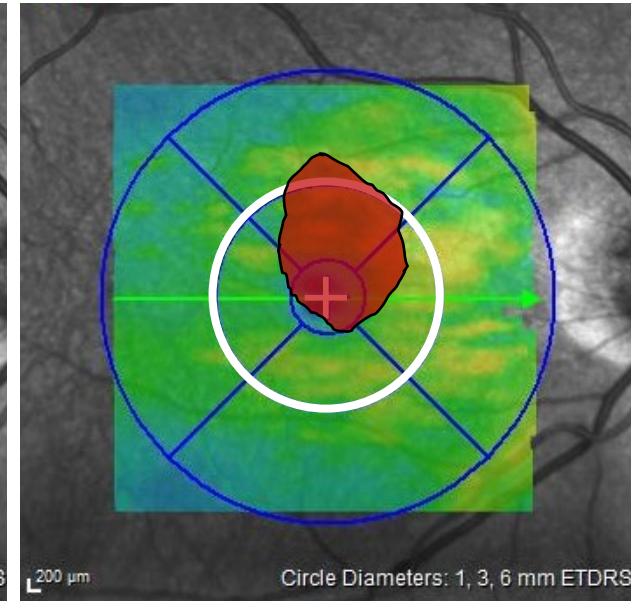
Within 1500  $\mu\text{m}$  of, but not involving the foveal center point

✗ **Excluded**



Outside of 1500  $\mu\text{m}$  from the foveal center point

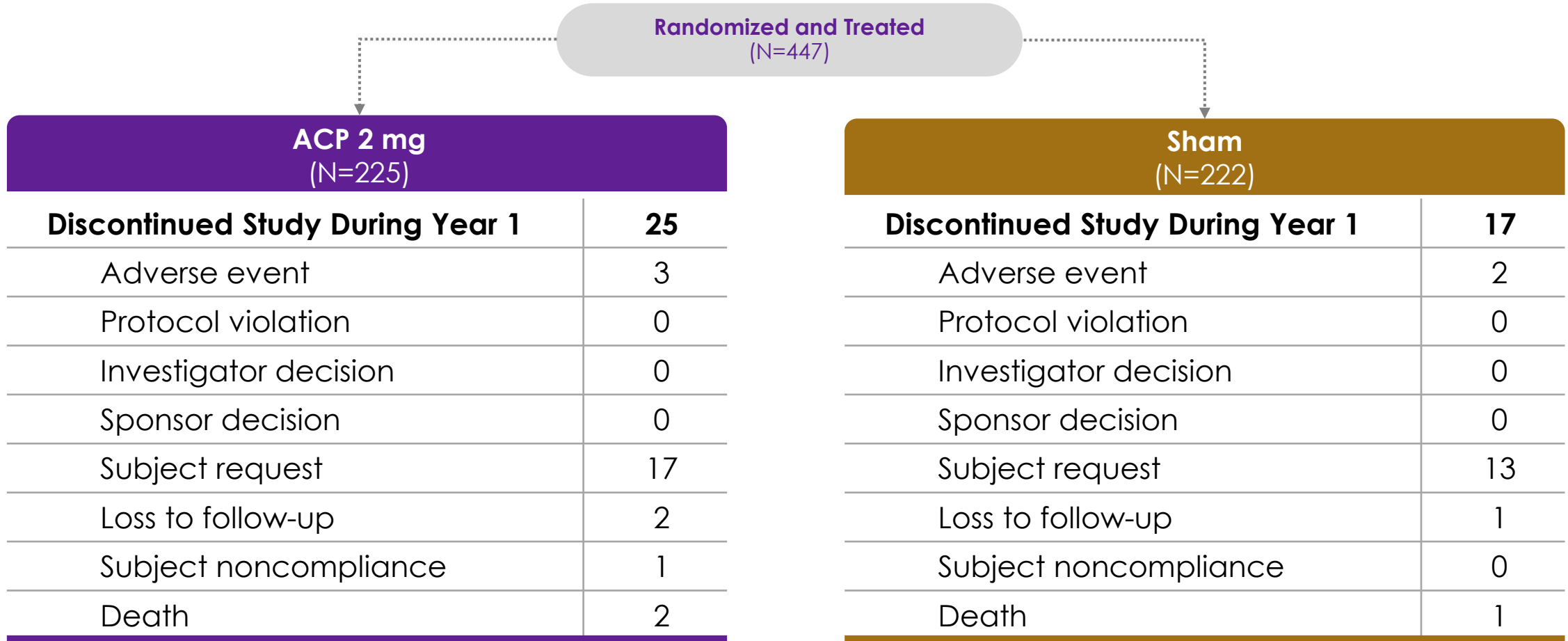
✗ **Excluded**



Foveal center point involvement

**NOTE:** unifocal lesion for example only, patients could have had multi-focal lesions

# Patient disposition through year one was comparable between both groups



Treatment fidelity through year one was greater than 90% in both groups

	ACP 2 mg (N=225)	Sham (N=222)
<b>Injection Fidelity Rate*</b>	<b>91%</b>	<b>94%</b>

\*Injection fidelity rate is calculated by dividing the total number of administered injections by the total number of expected injections based on the number of enrolled patients



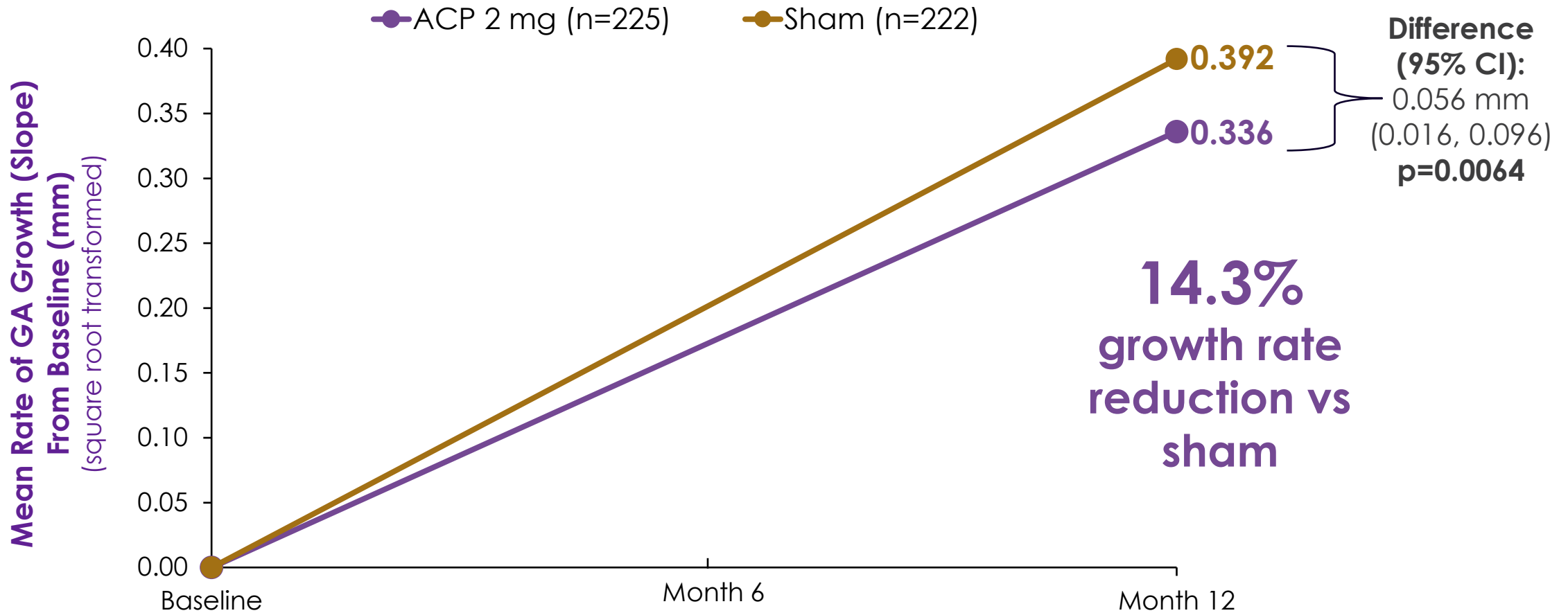
# Baseline patient demographics were balanced between the two groups

	ACP 2 mg (N=225)	Sham (N=222)
<b>Mean age, years (SD)</b>	76.3 (8.6)	76.7 (8.8)
<b>Female, n (%)</b>	154 (68.4)	156 (70.3)
<b>Caucasian, n (%)</b>	182 (80.9)	186 (83.8)
<b>Active smoker, n (%)</b>	106 (47.1)	107 (48.2)
<b>Geographic region, n (%)</b>		
USA	89 (39.6)	92 (41.4)
Rest of world	136 (60.4)	130 (58.6)

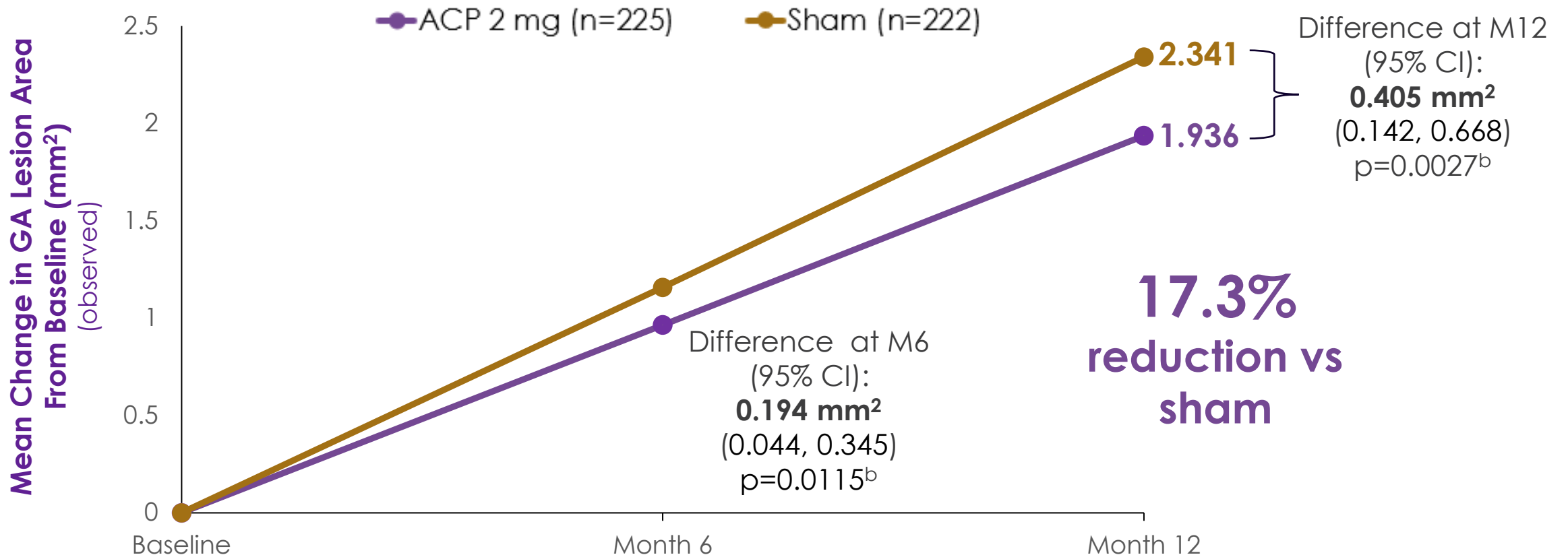
# Baseline ocular characteristics were balanced

	ACP 2 mg (N=225)	Sham (N=222)
<b>Mean total GA area, mm<sup>2</sup> (SD)</b>	7.48 (4.01)	7.81 (3.89)
<b>Mean square root GA area, mm (SD)</b>	2.64 (0.71)	2.71 (0.70)
<b>Bilateral GA, n (%)</b>	212 (94)	210 (95)
<b>GA lesion focality, n (%)</b>		
Unifocal	47 (20.9)	44 (19.8)
Multifocal	178 (79.1)	178 (80.2)
<b>Hyperautofluorescence pattern, n (%)</b>		
Diffuse/Banded	217 (96.4)	218 (98.2)
Focal/None	8 (3.6)	4 (1.8)
<b>Lens Status, n (%)</b>		
Phakic	102 (45.3)	94 (42.3)
Pseudophakic	123 (54.7)	128 (57.7)
<b>Mean BCVA, letters (SD)</b>	70.9 (8.9)	71.6 (9.4)
<b>Mean LL-BCVA, letters (SD)</b>	41.0 (19.7)	39.6 (19.6)

# Primary endpoint (slope analysis) achieved at year one with a high degree of statistical significance

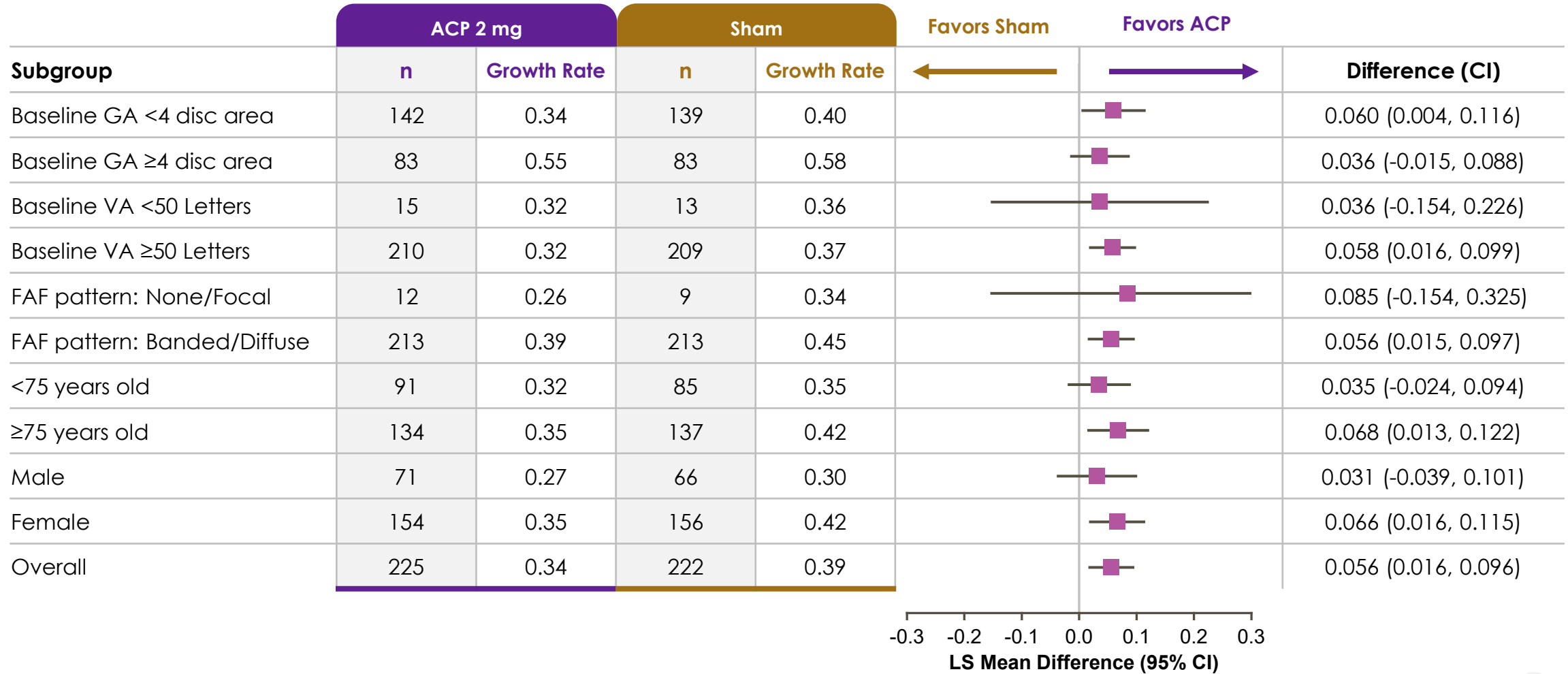


Mean change from baseline analysis utilizing observed data<sup>a</sup> was consistent with primary analysis

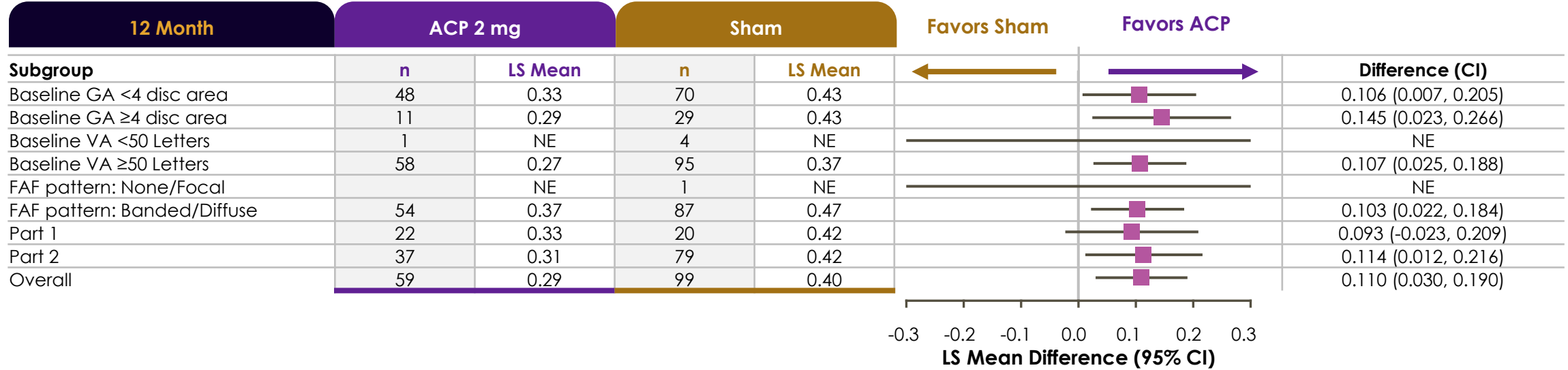


<sup>a</sup>non-square root transformation; <sup>b</sup>Descriptive p-value  
ACP, avacincaptad pegol; CI, confidence interval; GA, geographic atrophy.

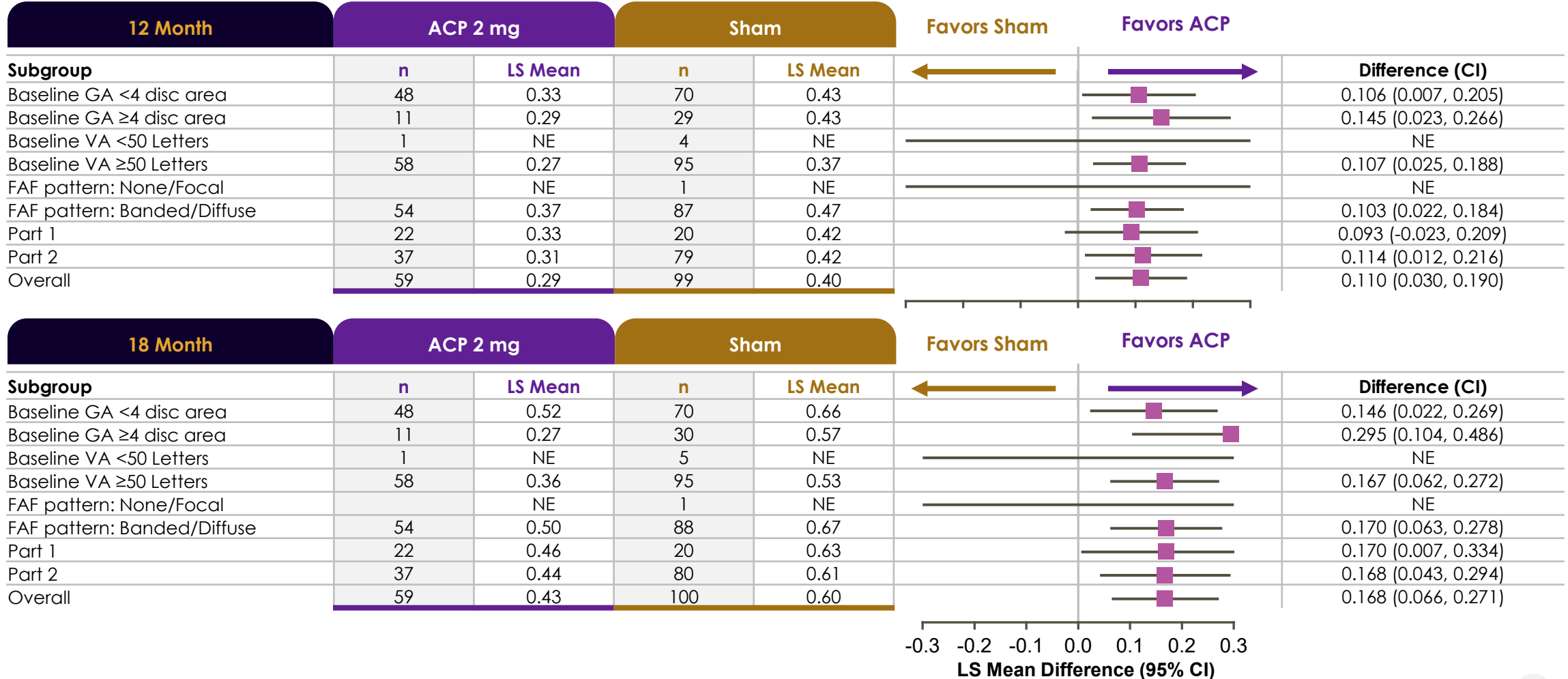
# Prespecified subgroup analysis shows benefit of avacincaptad pegol in all prespecified subgroups



# Benefit across subgroups is consistent among the pivotal GATHER1 and GATHER2 studies

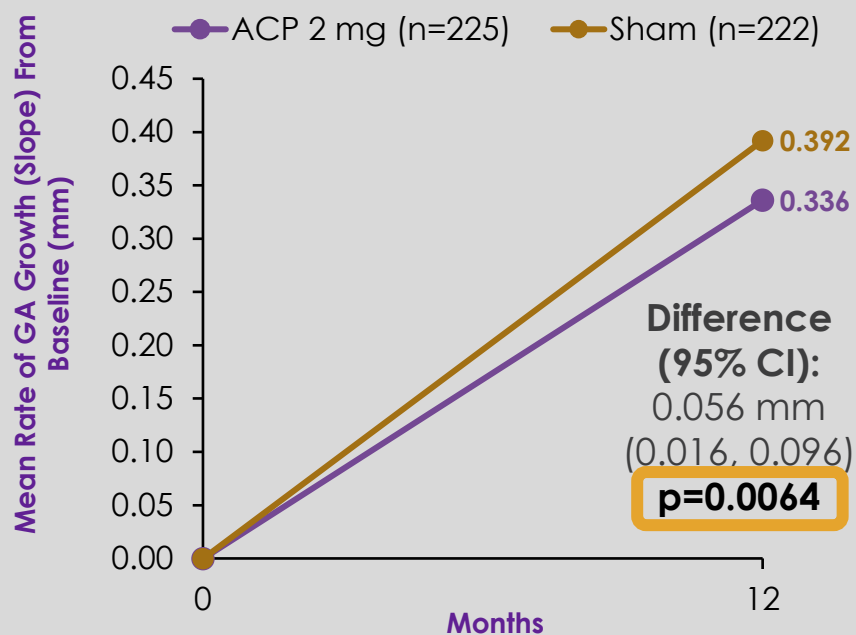


## Benefit across subgroups seen in GATHER1 increases with duration of therapy

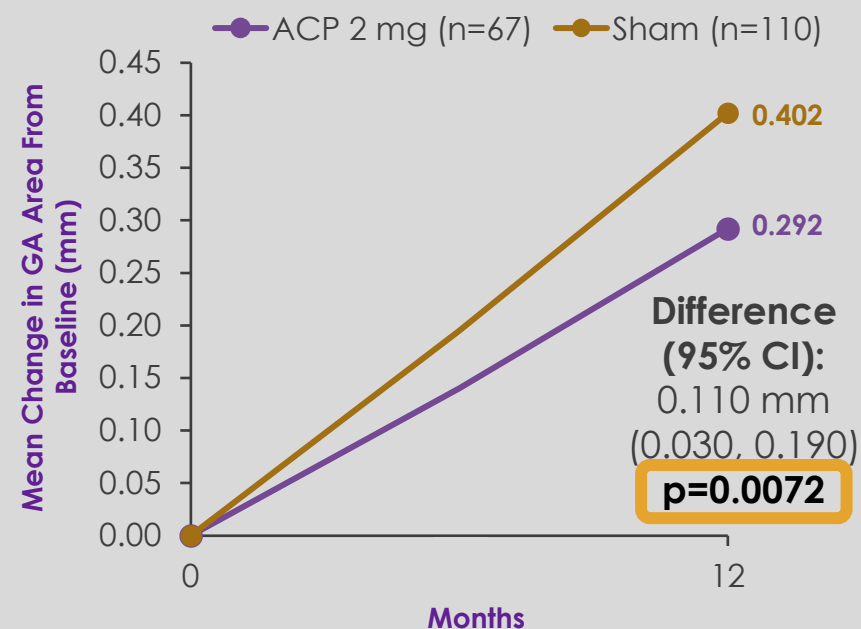


Avacincaptad pegol is the first investigational therapy in GA to achieve the 12-month prespecified, primary endpoint, in two pivotal, phase 3 studies

## GATHER 2



## GATHER 1





Thank you to the GATHER program  
investigators, research staff, and patients

